



Welcome to FrameLoader

Using FrameLoader you can synchronise iPhoto albums, iTunes playlists as well as custom pictures, songs and movies with digital pictureframes, memory cards and USB memory sticks.

If you are using the demoverision of FrameLoader you can only synchronise pictures and all pictures are further embedded with a watermark.

Your nova media team

Preparations

To successfully use FrameLoader, please follow the guidelines listed below:

- Some digital pictureframes can not connect directly to a Macintosh computer. In this case, you can use FrameLoader to sync a USB memory stick or memory card and plug this memory device into the digital pictureframe.
- Do not eject a memory device from the Mac's Finder as long as FrameLoader is using it.

FrameLoader

The program ,FrameLoader‘ allows you to set up a digital pictureframe, USB memory stick or memory card to synchronise iPhoto albums, iTunes playlists as well as custom pictures, songs and movies. You can sync your selection right from FrameLoader.

The sync monitor

But you do not have to open FrameLoader every time, just because the content of your selected iPhoto album or iTunes playlist has changed. To keep in sync, follow the steps below:

- Change the contents of your iPhoto album within iPhoto or iTunes playlist within iTunes.
- Connect the appropriate digital pictureframe, USB memory stick or memory card.
- The selected albums and playlists will be synchronised. A sync monitor will launch and display the copy process.

Set up a new memory device



Connect a digital pictureframe, USB memory stick or memory card with your Macintosh computer and run FrameLoader.

Click **Add Frame** to select the new memory device. A list of all available devices will be displayed. Choose the one you would like to use.

Teach-In

Dear User,

you are using a digital photo frame or memory card which is currently not known to us. In order to use it with FrameLoader, enter some information about this device below.

- Who is the manufacturer:
- Model name or number:
- Used for:

- Provide a name for this frame:
- Choose a frame color:

- If you know the resolution of this frame, enter it below. Otherwise leave the fields empty.
 pixels horizontal pixels vertical

If a memory device is used with FrameLoader for the first time, the software needs some additional information about the device. Please fill out the appropriate fields.

If you do not know or do not have some information, leave the fields to its defaults.

Restore to defaults will discard any changes and you can start anew.

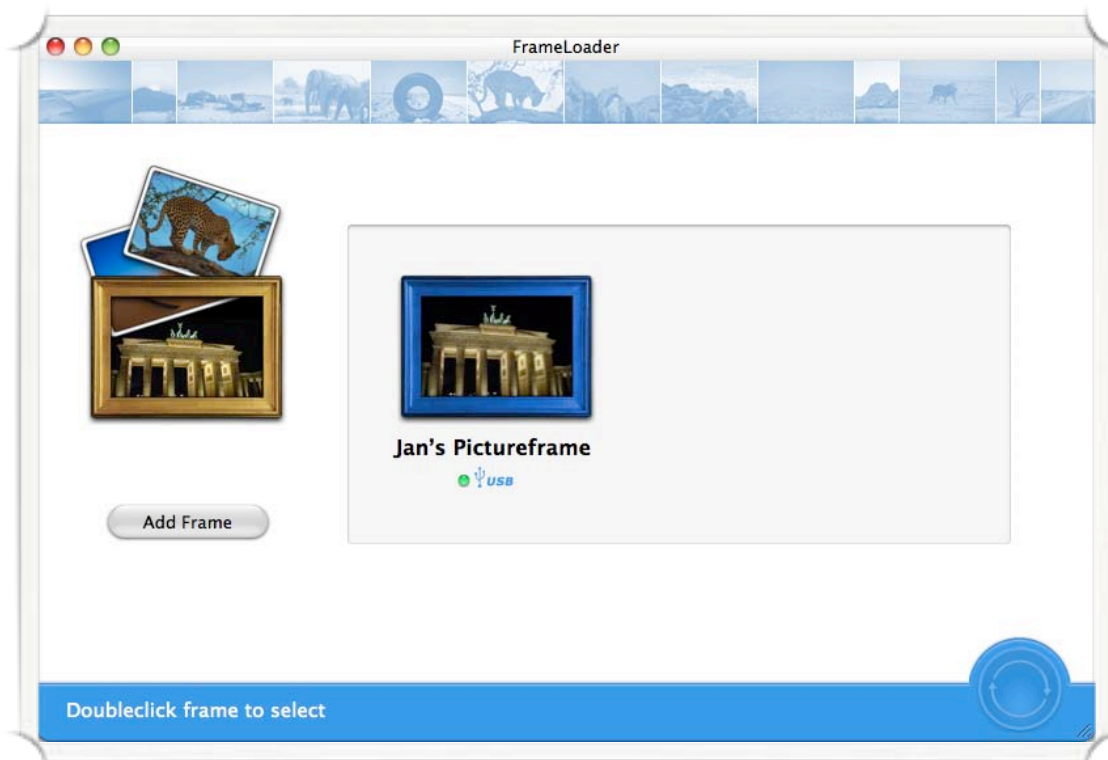
Manufacturer:	Enter the name of the Manufacturer
Model name or number:	Enter the model name or model number
Identical to:	If your digital pictureframe is already know to FrameLoader, you can select it in this list. Selecting an entry in the list will set some defaults for this frame, like the type of supported movie and audio files. Select „New model“, if you can not find your frame in the list.
Frame name:	Select a name for your memory device.
Frame color:	Choose a color for the frame icon used in FrameLoader and in the Sync monitor.
Resolution:	If you know the resolution of your digital pictureframe, enter it here. This will help to reduze the file size of pictures and movies and to provide the best viewing size.

Picture storage location:	Select the folder to store pictures. In most cases you can use the default setting.
Reduce picture size:	FrameLoader can reduce the file size of pictures. If a picture does not fit the digital frame proportions, it can either be displayed in letterbox format or in full height with contents at the side cut off.
Movies storage location:	Select the folder to store movies. In most cases you can use the default setting. Select ,Not supported' if the digital pictureframe can not display movies.
Supported movie formats:	Select the movie formats the digital pictureframe can display. FrameLoader supports MPEG4 AVI, MPEG4 MP4 and MPEG4 QuickTime. If none of the above formats are supported by your frame, FrameLoader will not copy any movies.

Music storage location:	Select the folder to store music files. In most cases you can use the default setting. Select ,Not supported‘ if the digital pictureframe can not play music files.
Unterstützte Filmformate:	Select the music formats the digital pictureframe can play. FrameLoader supports MP3 and unprotected AAC. If none of the above formats are supported by your frame, FrameLoader will not copy any movies.

Memory device selection

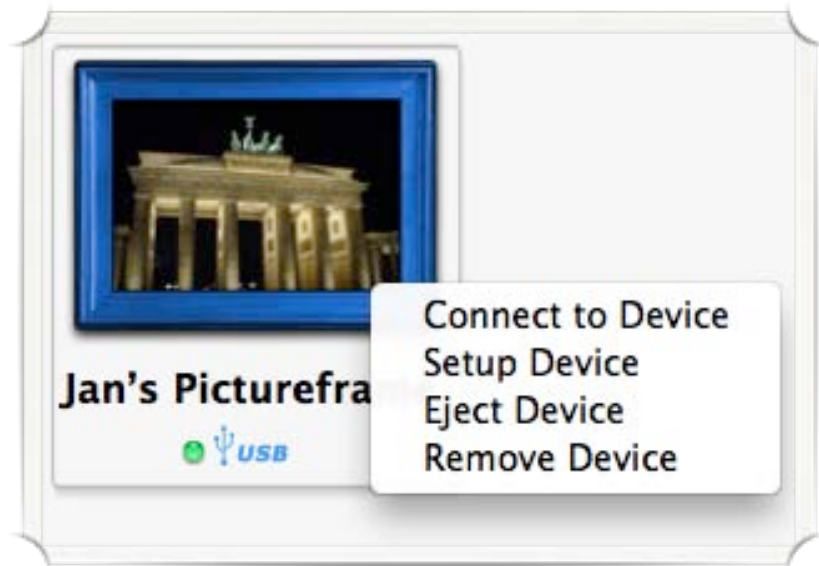
Upon launch, FrameLoader displays a list of known memory devices. You can add a new device by clicking **Add Frame**.



- Doubleclick the memory device you want to work with. Currently connected devices are displayed with a green light next to its name.
- You can edit memory devices, which are currently not connected to the Macintosh. FrameLoader will sync the changes you make the next time the device is attached to the Macintosh.

Memory device management

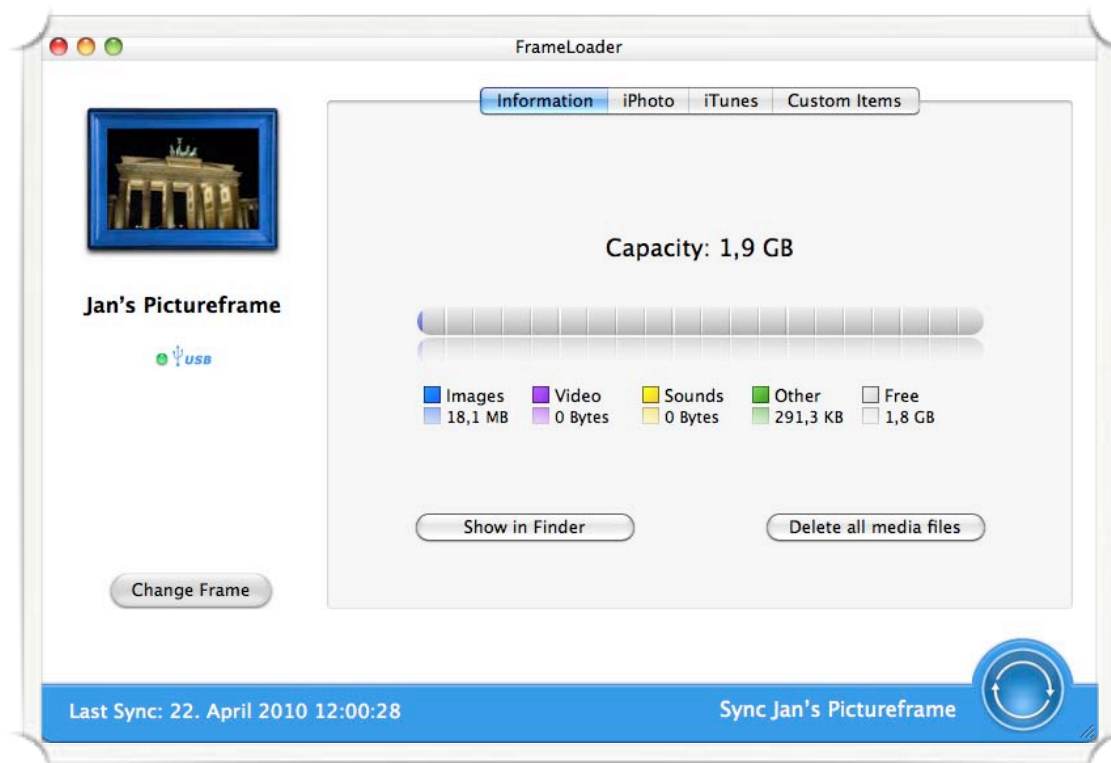
Right-click on a memory device to see additional options for the selected device.



Connect to device:	Opens the device detailed screen to select contents
Setup Device:	Open the Teach-In sheet to e.g. change the name of the frame
Eject device:	Ejects the device safely from the Macintosh computer
Remove device:	Removes the device from FrameLoader and erases all device information

Data selection

FrameLoader displays the information screen of the selected device. You can see the memory usage and the amount of free memory available.



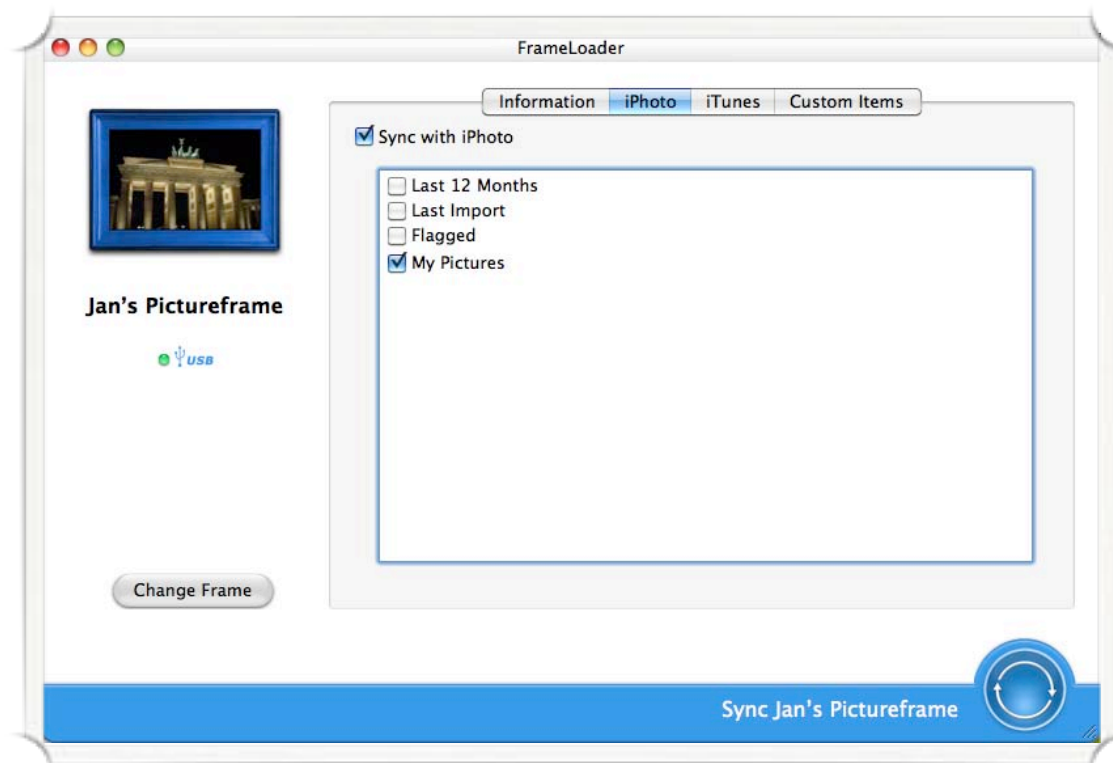
Use the tabs ,iPhoto', ,iTunes' and ,Custom Items' to select the data you want to transfer to the selected memory device.

Click **Delete all media files** to delete all pictures, music and movie files from the device.

This is a fast way to free space on the memory device to sync your selected data onto it.

Select iPhoto albums

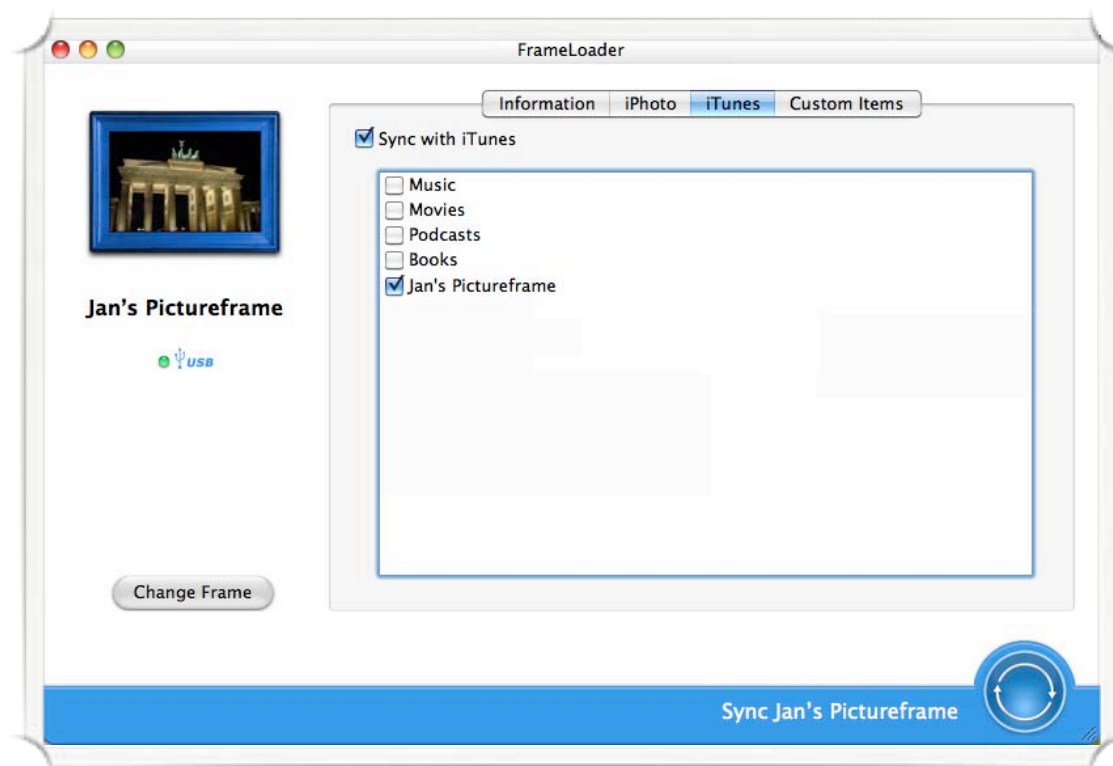
Select the iPhoto albums which you want to be synchronised with your memory device. The albums can include pictures and movies. Movies will only be copied if the digital pictureframe can display them.



- Activate the checkbox ,Sync with iPhoto'
- Check the desired albums

Select iTunes playlists

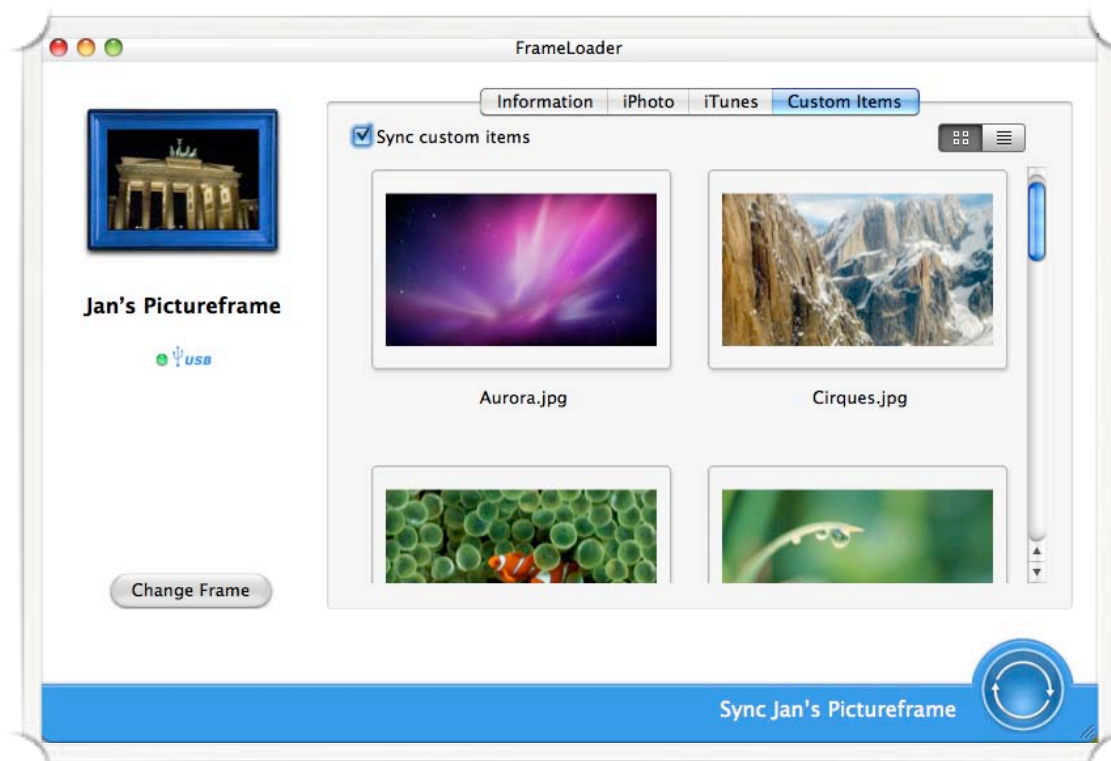
Select the iTunes playlists, which you want to be synchronised with your memory device. The playlists can include songs and movies. Movies will only be copied if the digital pictureframe can display them.



- Activate the checkbox 'Sync with iTunes'
- Check the desired playlists

Select Custom Items

Select the pictures, music files and movies playlists, which you want to be synchronised with your memory device. Music files and movies will only be copied if the digital pictureframe can display them.



- Activate the checkbox 'Sync custom items'
- Drag and drop all desired files into the 'Custom Items' window.

Sync the data

Click the ‚Sync‘ button to synchronise the selected albums and playlists onto the memory device. The ‚Sync‘ button will rotate until the data transmission is finished. After the sync process, the time and date of the last sync will be displayed.

If you changed the data for a memory device, which is currently not attached to the Macintosh computer, you can not click the ‚Sync‘ button. In this case, FrameLoader will memorize your selections and you can quit the program.

The next time you will connect the memory device to your Macintosh computer, all selected albums, playlists, pictures, songs and movies will be synced to the device automatically.

Sync monitor

You do not have to open FrameLoader every time, just because the content of your selected iPhoto albums or iTunes playlists have changed. The sync monitor of FrameLoader will sync the contents for you.

To keep in sync using the sync monitor, follow the steps below:



- Change the contents of your iPhoto album within iPhoto or iTunes playlist within iTunes.
- Connect the appropriate digital pictureframe, USB memory stick or memory card.
- The selected albums and playlists will be synchronised. A sync monitor will launch and display the copy process.

Activate your license of FrameLoader

Your license of FrameLoader has to be activated to be able to synchronise without the limitations of the demoverision. To do so, follow the steps listed below:

- Select [Frameloader > Activate license](#) in the menubar.
- Enter your activation key and e-mail address and click **Activate license**.
- Accept the license terms.
- FrameLoader is now activated.

If you do not own an activation key for FrameLoader, you can buy one online at:
<http://www.novamedia.de/>

Transfer a license of FrameLoader

You can transfer your license of FrameLoader to another Macintosh computer. To do so, follow the steps listed below:

- Deactivate FrameLoader on your current Macintosh computer:
Select **FrameLoader > Deactivate license** in the menu bar.
- Install and activate FrameLoader on the new Macintosh computer.
- If you need to use FrameLoader on two Macintosh computers simultaneously, you can buy a second license in our online store at: <http://www.novamedia.de/>

Deinstall FrameLoader

To deinstall FrameLoader, select [Help > Deinstall FrameLoader](#) in the menubar. FrameLoader and its components will be deleted from the Macintosh computer.

If FrameLoader was activated, it will be deactivated. For this, a working online connection is required.

Technical support

Technical support for FrameLoader is available online at:
<http://www.novamedia.de/support>

If you want to send us an e-mail, use the address mac@novamedia.de.