



Welcome

Thank you for choosing launch2net.

Using launch2net, you you can turn your cell phone, USB-modem or Datacard into a wireless Internet connection device for your Macintosh Computer.

launch2net supports more than 100 devices and already contains more than 300 connection settings for most network providers worldwide.

Please note: If you are using the free demo version, be aware that it can only establish 10 connections for 5 minutes each. Please purchase the full version for unlimited use of launch2net.

On the following pages, you will find all information to successfully use launch2net with your Macintosh Computer. Enjoy!

Your nova media team

Preparations

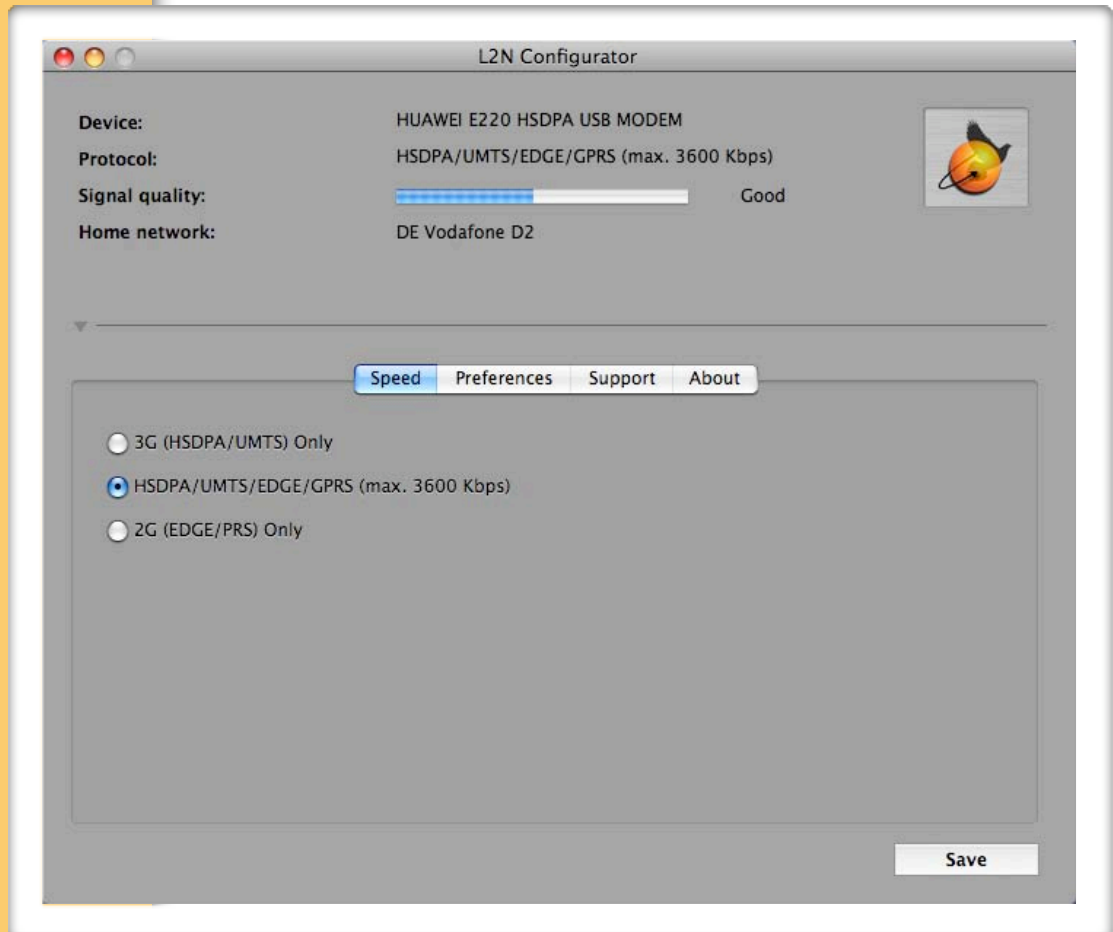
mobile connections are really easy using launch2net. For faultless use of the software, please be sure to accomplish the following conditions:

- launch2net supports many different mobile devices like cell phones, PC datacards, ExpressCards and USB-modems worldwide. Please test your device with the demo version before buying a full version to make sure it works with launch2net. An up-to-date list of all supported devices can be found here: www.novamedia.de/devices/launch2net
- Please use an adequate subscription plan. Some mobile network providers do not allow the usage of a mobile device as a modem by default. If in doubt, please ask your mobile network provider about this.
- Make sure that your cell phone is switched on and contains a SIM Card. For using the cell phone as a modem, it first has to be connected to the Macintosh Computer.

Please note: If you want to connect your cell phone with your Macintosh Computer via Bluetooth, you will find an instruction in the chapter „Support: How to pair your Macintosh Computer with your cell phone’ at the end of this manual.

First start

When starting launch2net for the first time, the software will search for a connected device. A new window will open, the launch2net Configurator.



The launch2net Configurator detects your mobile device and your network operator, so launch2net can connect your Macintosh computer to the Internet with one click.

The Configurator

The Configurator searches for the connected device and shows its type, the signal quality and the network provider you are logged into. If you are using a PC datacard, ExpressCard or USB-modem, you might have to enter a PIN number (given to you by your network provider).

Please note: With some PC datacards and cell phones, the network provider cannot be detected automatically. In this case, a list will appear on the left or right side of the Configurator window, from which you can select the network provider manually. Please choose the country and the network provider that hosts your SIM Card, e.g. US T-Mobile. If you should have chosen the wrong provider, please follow the instructions in the chapter 'Support: Selecting network provider manually' at the end of this manual.

Subsequently, the connection speed can be chosen, it depends on the device used. In general, the fastest connection that is available and supported by your mobile device and network provider will be used as default: HSDPA, UMTS (3G), EDGE or GPRS.

Please note: Some network providers require a fixed setting of the connection speed on 'HSDPA/UMTS (3G) only' or 'UMTS (3G) only' or 'GPRS only', respectively. If your PC datacard supports this fixed connection setting, you can choose this option in the launch2net Configurator.

Click 'Save' to leave the Configurator. The settings you have chosen will be saved and you will return to the launch2net main window. launch2net is now ready to establish a connection to the Internet.

Connect

As soon as launch2net has identified an adjusted mobile device, the blue labeled 'Connect' button appears and the status line displays „Ready to connect’.



Click 'Connect'. After a few seconds you will be online, you can now e.g. surf the web, check your e-mail and send or receive data.

launch2net will display the current upload- and downloadspeed as well as the amount of data transferred during the connection. In addition, the elapsed connection time is shown.

Disconnect

To close the connection, click 'Disconnect'.



Tip: You can connect and disconnect without opening launch2net at all. To use this feature, you have to enable the launch2net menu icon. Go to the 'launch2net' menu in the menu bar and choose 'Preferences'. Select the option 'Show launch2net status in the menu bar'.

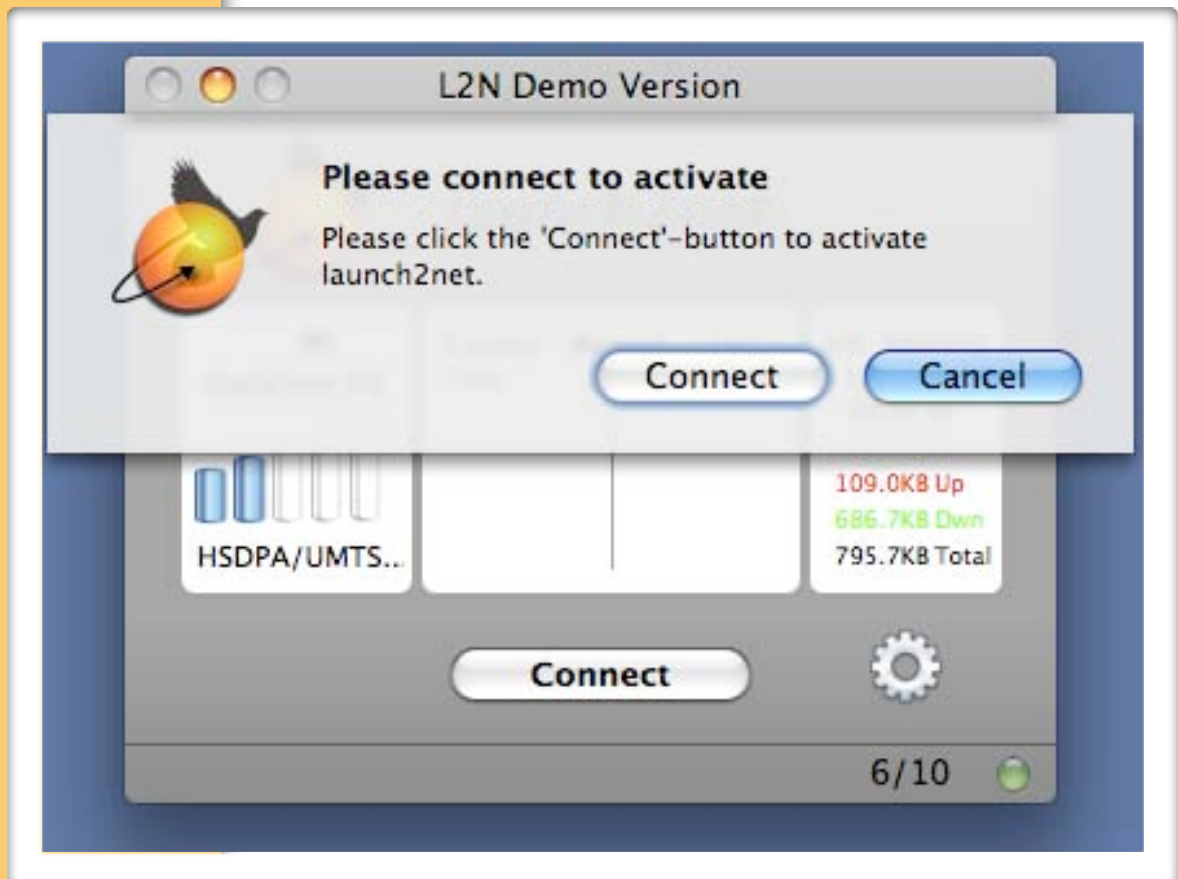
You can now quit launch2net and use the menu bar icon to connect and disconnect with your mobile device.

Activate

For unlimited use of launch2net, the software must be activated on your Macintosh Computer.

Please note: If you change your Macintosh Computer later on, you can de-activate the software and activate it again on another Macintosh Computer. This way, you can protect your investment in launch2net.

To activate launch2net, go to 'launch2net' in the menu bar and choose 'Activate...'. launch2net will request to connect to Internet:



Tip: To activate launch2net, you will need an activation key. You can buy it online at www.novamedia.de

Activate

If the connection to the Internet is established, you will be asked to enter the Activation Key and your e-mail address.

Activation

Activation form

1. Enter the Activation key:
Please enter the Activation key you bought in the following field. The Activation key is either on the package you bought or was sent to you via e-mail!

Activation key:

2. Enter your e-mail address:
Please enter your e-mail address. This e-mail address is used to associate support inquiries to this personal identification. It will not be given away to a third party nor used for other purposes.

E-Mail address:

Go Back Continue

The e-mail address will only be used by nova media to identify you in case of support issues. This address will not be used for other purposes or given to any third party.

Accept the license agreement and click 'Continue' to activate launch2net and use it without restrictions.

Deactivate

To Deactivate launch2net, go to 'launch2net' in the menu bar and choose „Deactivate License...'. The following window will be displayed:



Click 'Deactivate'. Launch2net will now fall back into the demo mode.

You can either activate launch2net on this computer again or activate launch2net on another Macintosh Computer of your choice.

Connection statistics

Using launch2net to monitor your data and time usage is very convenient.



You can view the statistics of the current session, the current period and the last period. A period can include several sessions and you can define the length of a period.

Details of the current session:

As soon as launch2net connects to the Internet, you'll see all details about the current session in the main window. This includes the upload and download speed, the amount of data transferred in total and separated for upload and download and the time elapsed since you pressed the 'Connect' button. This data will cumulate until you press 'Disconnect'. If you press the 'Connect' button again, this process begins from scratch.

Connection statistics

Details of the current period:

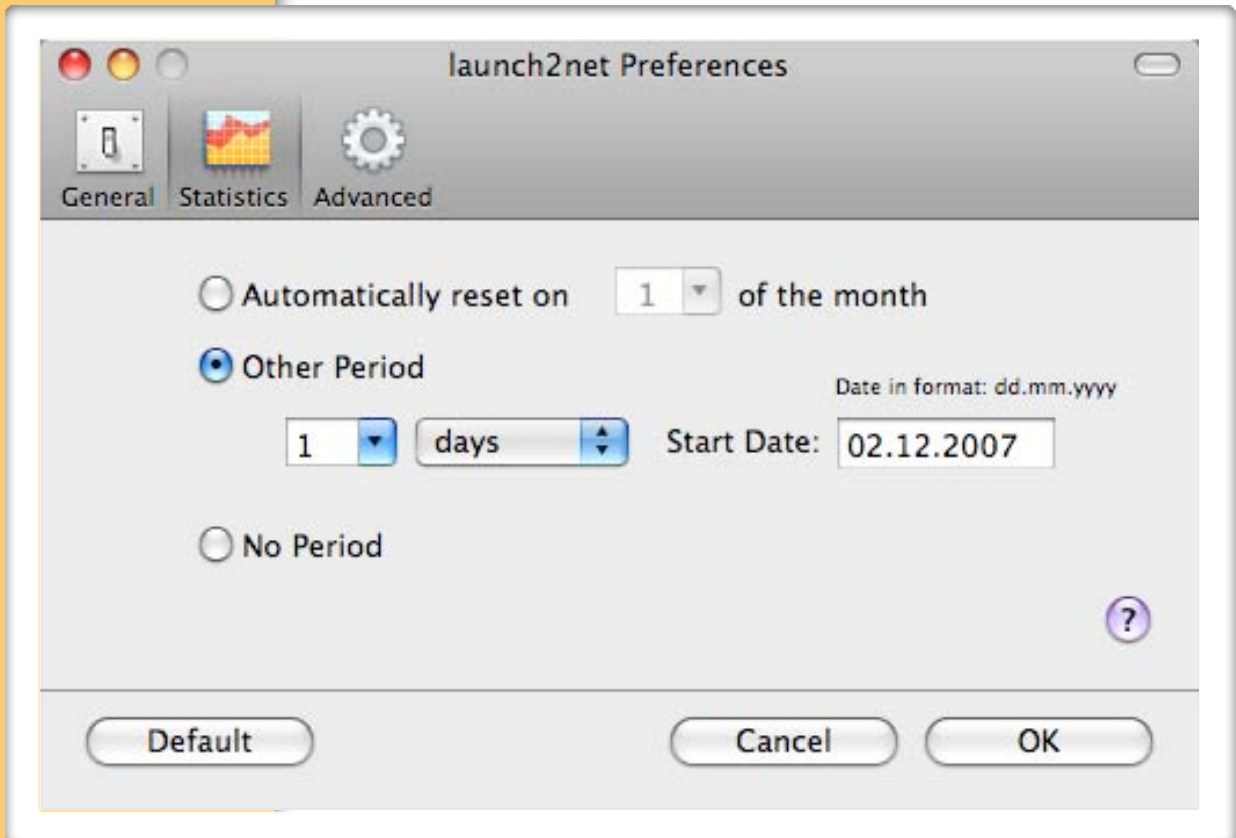
Click the statistics window. It will flip to display the data and time usage of the current period as well as these connection statistics of the the last period and those of the current session.



Connection statistics

Change the period settings:

To define a period, go to 'launch2net' in the menu bar, then click 'Preferences...' and select 'Statistics'.



You can now choose to reset the period on a given day in a month, define the length of a period until it is resetted or choose not to reset the period at all. This means the volume and data usage will continue to be cumulated each until you change the settings here.

Change of SIM or device

If you change your SIM Card or your mobile device, you have to create a new configuration. launch2net will remember each combination of mobile device and SIM card so you will have to run this process only once for each combination.

Please note: If you want to use a new cell phone via Bluetooth, you have to pair the Macintosh Computer and the new phone again. If you have used another phone with this Macintosh Computer in the meantime, launch2net can not recognize your phone any more.

If launch2net recognizes a change of the SIM-card by itself, it will display any setting that has to be changed in red:



Click 'Change' to create a new configuration. After finishing the configuration, click 'Save' to return to the launch2net main window.

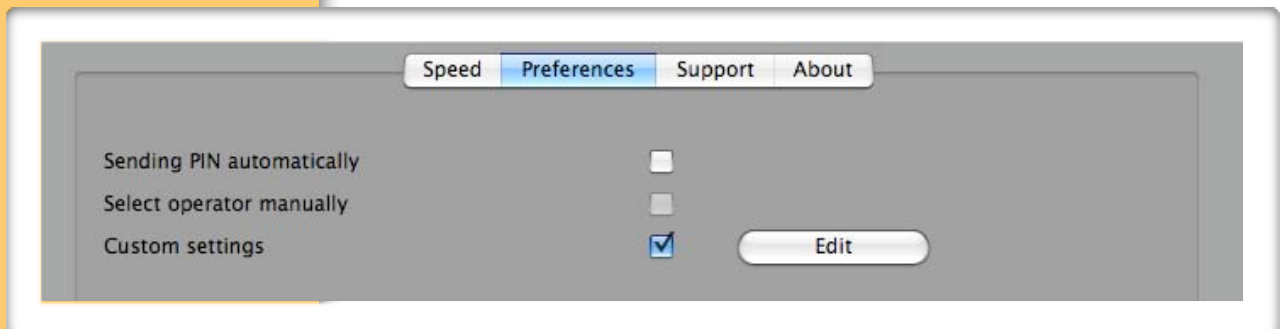
Custom settings

In some cases, it will be necessary to use some particular HSDPA, UMTS (3G), EDGE or GPRS settings to establish a mobile Internet connection.

This will be the case once the connection settings of a mobile network provider have changed or if you want to use a connection which has a dedicated tariff or which is only available for some specific subscription plans. These settings mostly contain their own, different APN (Access Point Name).

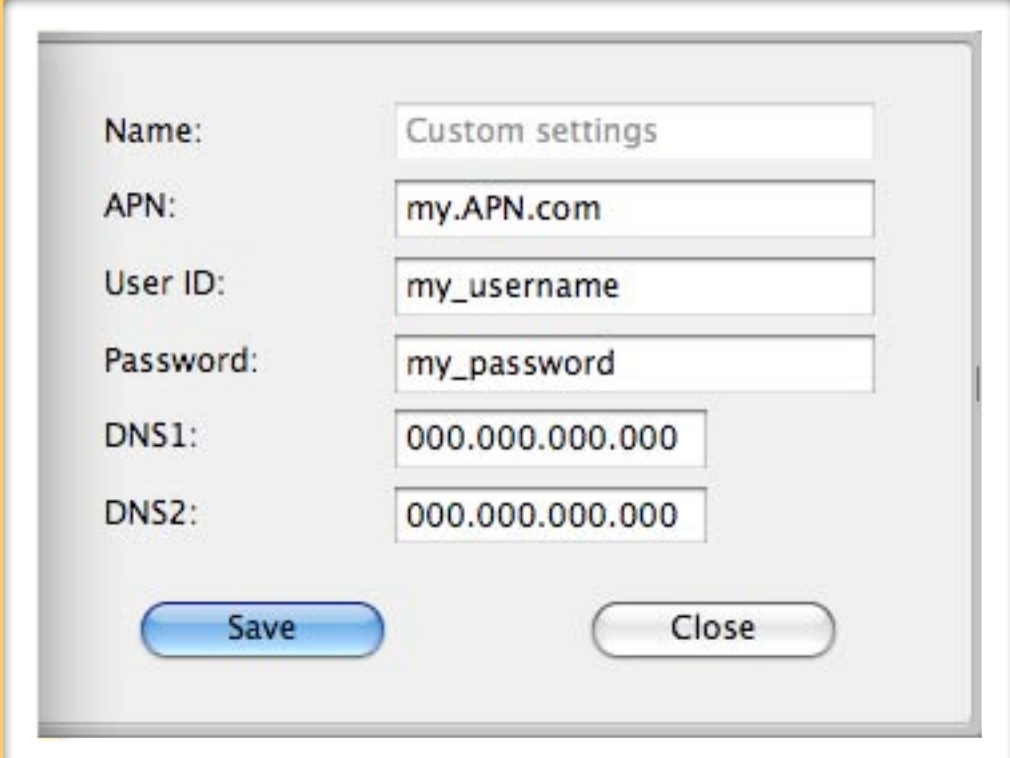
To enter the custom settings, please click the wheel button next to the 'Connect' button. You will see information about the currently active mobile device. Click 'Change' to open the Configurator.

It will search for the mobile device, for the signal quality and the network provider. Click 'Preferences' and check the box 'Custom settings'. Then click 'Edit':



Custom settings

The launch2net Configurator will open a new window to enter the custom settings in:



The screenshot shows a dialog box titled "Custom settings" with the following fields and values:

Name:	Custom settings
APN:	my.APN.com
User ID:	my_username
Password:	my_password
DNS1:	000.000.000.000
DNS2:	000.000.000.000

At the bottom of the dialog box, there are two buttons: "Save" (highlighted in blue) and "Close".

Enter your data here. When you are finished, click 'Save'. These settings are now active and you can leave the launch2net Configurator by clicking 'Save'. In launch2net, click 'Connect' to establish a connection with the new settings.

Please note: Make sure the data you enter is correct, otherwise launch2net will not be able to establish an Internet connection. If this happens, change the settings again in the same way as before.

Roaming situations

If you continue to use the same SIM card abroad, the settings which launch2net uses for your mobile network provider at home, are also applicable in roaming situations.

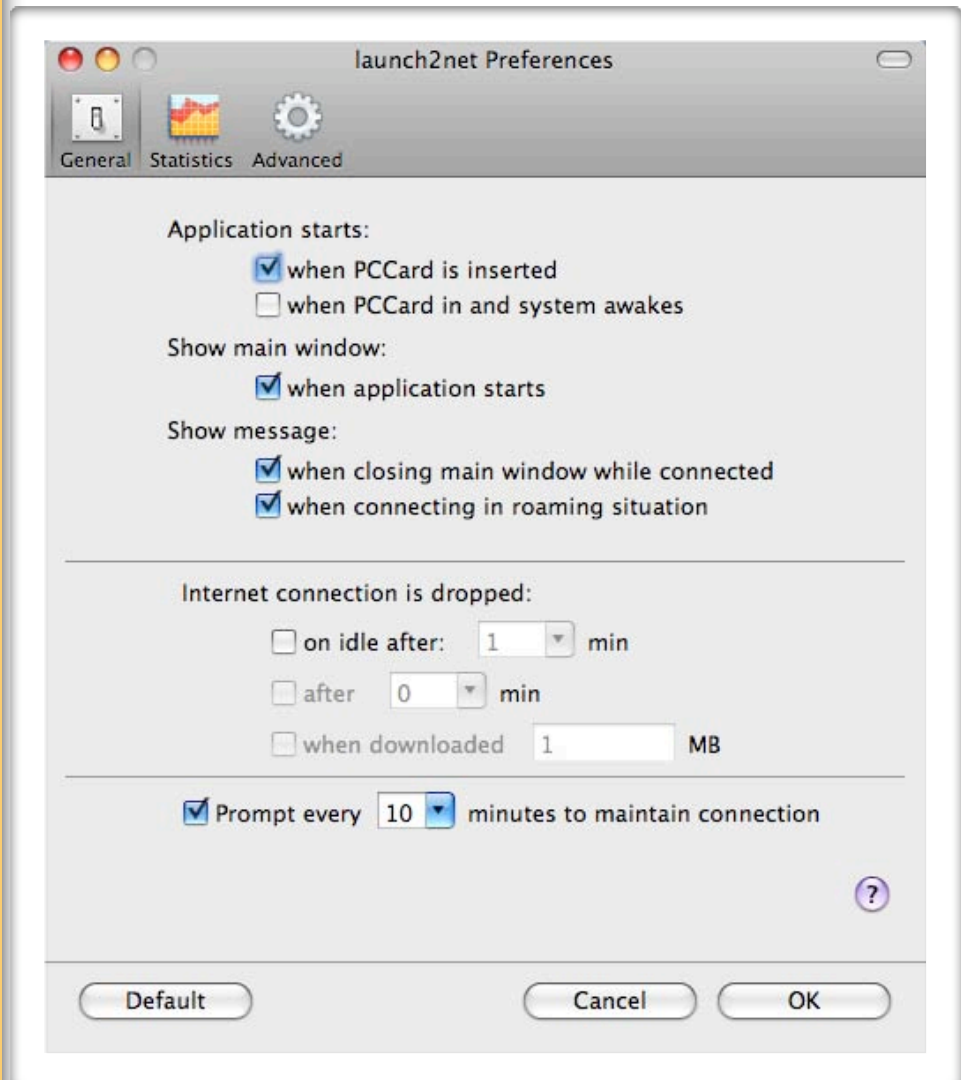
Connect your mobile device to your Macintosh Computer, open launch2net and establish a mobile Internet connection as usual.

Please note: Your cell phone subscription plan must support data roaming. Furthermore, your network provider must have a roaming partner for data connections in the roaming network. Please ask your network provider if these requirements are fulfilled.

If you want to use a different SIM Card in a foreign country, open the Configurator again and let launch2net choose the right settings for the new SIM card, like described in the chapter ,Change of SIM or device‘.

Preferences

Open the launch2net Preferences to adjust launch2net to your individual needs. To do so, select 'launch2net' in the menu bar, then click 'Preferences...'. You will see the launch2net Preferences window.



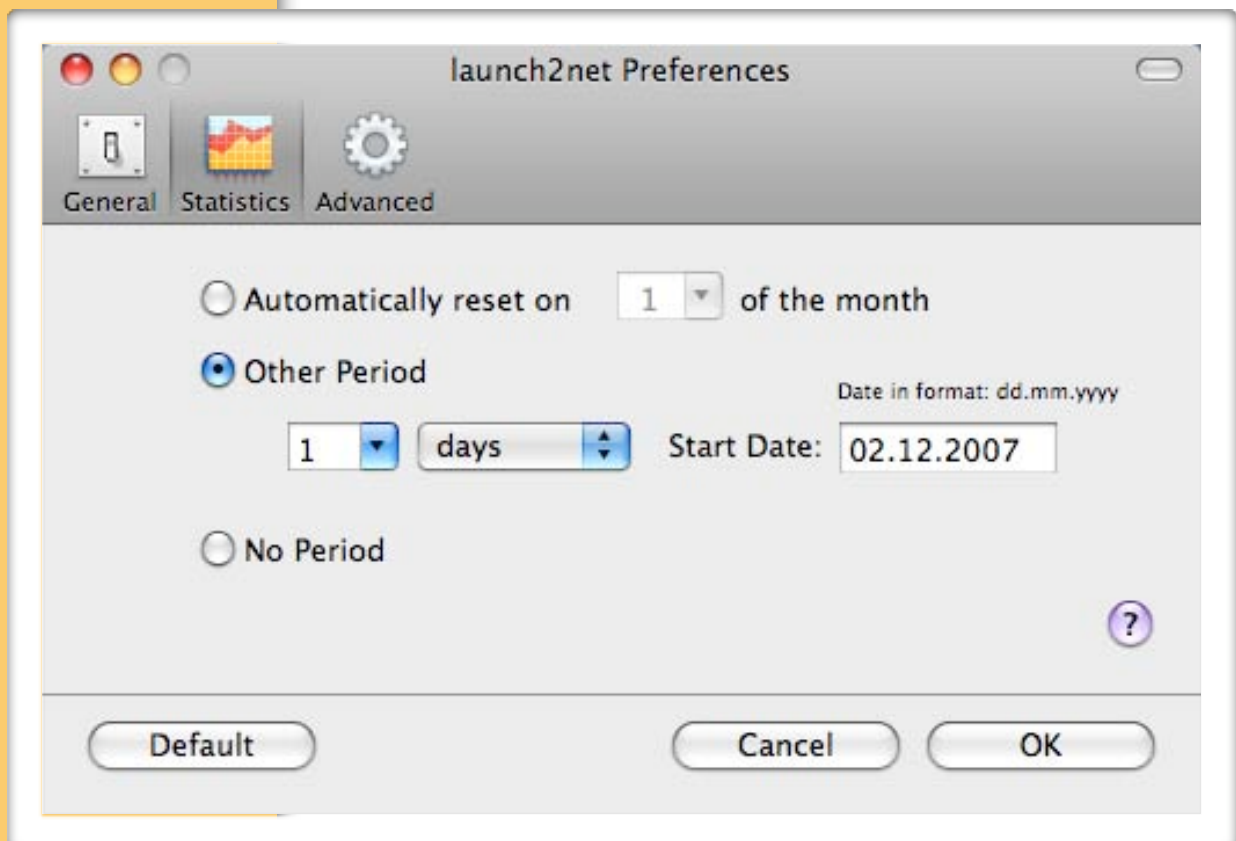
General settings

Configures the way launch2net behaves. You can e.g. start launch2net when a PC datacard is inserted or disconnect if a certain time or data limit is reached.

Preferences

Statistic settings

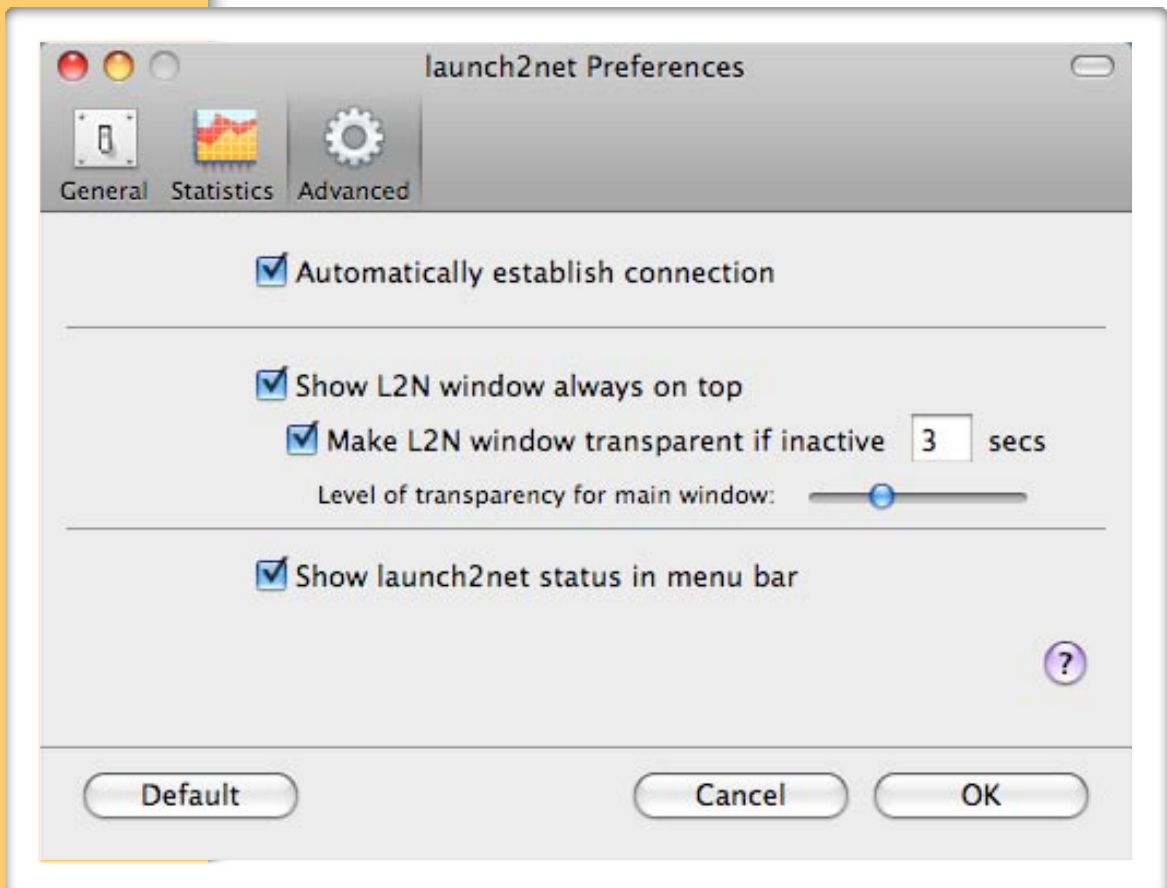
To define a period, go to 'launch2net' in the menu bar, then click 'Preferences...' and select 'Statistics'. You can now choose to reset the period on a given day in a month, define the length of a period until it is reset or choose not to reset the period at all. This means the volume and data usage will continue to be cumulated each until you change the settings here.



Preferences

Advanced settings

Here you can tell launch2net to automatically establish a connection when the application is launched. In addition you can select to show the launch2net main window always on top of all other windows. If you select this option, the launch2net main window can be set to a transparent mode as not to hide information from other programs on smaller screens.



Preferences

In addition, you can use a menu icon to control many launch2net features without opening launch2net at all:



If the launch2net menu icon is active, you can connect and disconnect without any need to open the main launch2net application.

It is possible to display the elapsed connection time and the status of the connection process as well.

Support

launch2net is not Multi-User compatible. You can install launch2net for a normal user, but you need an administrator password to install it.

How to uninstall launch2net:

Run the launch2net installer. Select UNINSTALL instead of EASY INSTALL in the pop-up menu and continue. launch2net will be deleted from your Mac. Please restart your Macintosh Computer after the Uninstall of launch2net.

Error: A modem can not be found

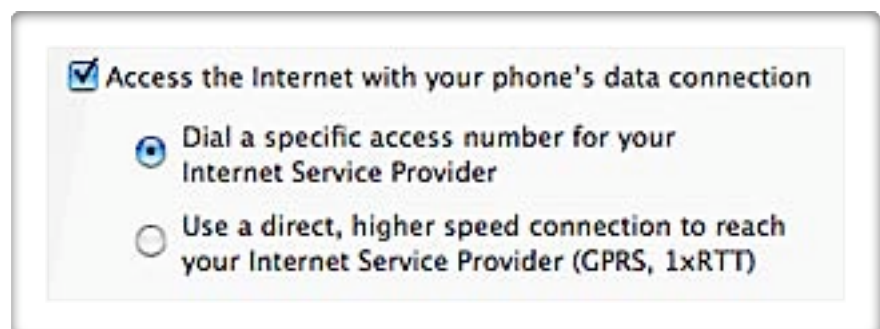
- Remove the mobile device. Restart the Mac, then wait until the Macintosh Computer has booted. Then attach the mobile device again and wait for 20 seconds, then run launch2net.
- Make sure you have not installed any other drivers or software which accesses the mobile device. If so, uninstall this software. Then uninstall launch2net, then restart. Now install launch2net in the latest version and restart. Attach the mobile device and run launch2net.
- Please make sure your cell phone has the latest firmware installed. Older firmware may not be able to establish a working connection, since the phone may not understand the commands launch2net sends to it.
- If you want to use a bluetooth connection, you may have to pair the Macintosh Computer and the phone again. If you have used another phone with this Macintosh Computer in the meantime, launch2net will not recognize your phone any more. (See below for details on pairing devices)

Support

Pairing a cell phone to a Macintosh Computer

To establish a connection between launch2net and a cell phone, the cell phone must be paired with the Macintosh Computer. Please activate Bluetooth on your cell phone and start the Bluetooth Assistant on your Macintosh Computer. To do so, open 'System Preferences...' -> Bluetooth and choose the tab 'Devices'. There, click 'Set Up New Device'.

Follow the instructions of the Bluetooth Setup Assistant. When you are asked for services, please activate „Access the Internet with your phone's data connection' as shown below:



Click „Continue' and do not fill in any more data until the assistant is finished. Close the System Preferences. Your cell phone is now paired with your Macintosh Computer and you can use launch2net.

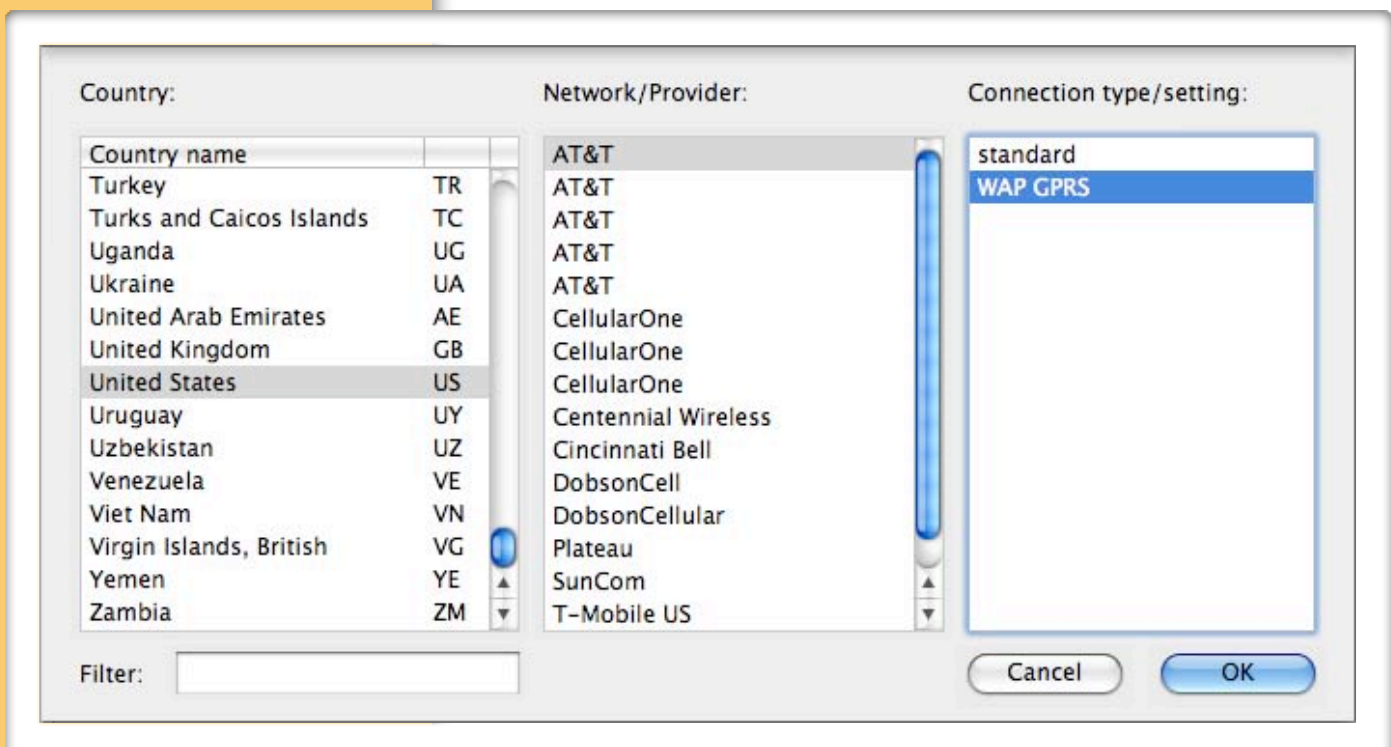
Support

Selecting network provider manually

If you should have selected a wrong network provider while configuring launch2net, you can change this easily as follows:

Open the Configurator. For this, please click the wheel symbol on the right next to the 'Connect' button. You will see information about the mobile device which is currently active in launch2net. Click 'Change' to open the Configurator. It will now search for the mobile device, signal quality and network provider.

Choose the tab 'Preferences'. Click the option 'Select operator manually' and choose the country and the network provider which hosts your SIM card:



If there is more than one entry for your mobile network operator, please choose the first one. Subsequently, click 'Save' to close the Configurator and establish a connection to the Internet with launch2net.

Support

If you should not be able to establish a connection, repeat choosing the network provider in the Configurator, but this time select the next entry in the list, e.g. US Cingular WAP GPRS. Subsequently, click 'Save' and establish a connection to the Internet with launch2net.

Further Support:

Further support is provided on our website at <http://www.novamedia.de/support>. On this page, you will find answers to frequently asked questions and also a contact form to send us an e-mail.

Please do not forget to send us your phone number when asking for support, so we can reach you quickly if needed.

Thank you!

nova media