



# launch2net for Linux Ubuntu

**Thank you for choosing launch2net for Linux.**

launch2net for Linux Ubuntu is the first professional mobile Internet Connection Manager for Linux Ubuntu users from nova media.

launch2net will recognize your type of modem or ExpressCard as well as the SIM card and does not need intricate driver installations or configurations.

**Please note:** You are using a Beta version of launch2net for Linux Ubuntu. Not all functions are implemented, so forgive us any error you encounter. Please send your remarks to [linux@novamedia.de](mailto:linux@novamedia.de).

Please follow the steps on the following pages to successfully use launch2net for Linux Ubuntu.

Enjoy!

Your nova media team

# launch2net for Linux Ubuntu

## Disclaimer

This disclaimer applies to launch2net 2.0 Beta for LINUX Ubuntu from nova media MDS GmbH. This software has not been released for sale, distribution or usage for the general public.

By using launch2net 2.0 Beta for LINUX Ubuntu, you are considered to have read this disclaimer and agreed to its terms.

launch2net 2.0 Beta for LINUX Ubuntu software is provided "as is" without warranty of any kind, either expressed or implied, including, but not limited to, the implied warranties of merchantability and fitness for a particular purpose. The entire risk as to the quality and performance of launch2net 2.0 Beta for LINUX Ubuntu is with you. Should it prove defective, you assume the cost of all necessary servicing, repair or correction.

It is therefore up to you to take adequate precaution against possible damages resulting from launch2net 2.0 Beta for LINUX Ubuntu. Usage of launch2net 2.0 Beta for LINUX Ubuntu is at your own risk and may void warranty on your product. If you are in any doubt of your capabilities to make such a decision, please do not use launch2net 2.0 Beta for LINUX Ubuntu.

In no event will nova media MDS GmbH be liable to you for damages, including any general, special, incidental or consequential damages arising out of the use or inability to use launch2net 2.0 Beta for LINUX Ubuntu (including but not limited to loss of data or data being rendered inaccurate or losses sustained by you or third parties or a failure of the software to operate with any other programs), even if nova media MDS GmbH has been advised of the possibility of such damages.

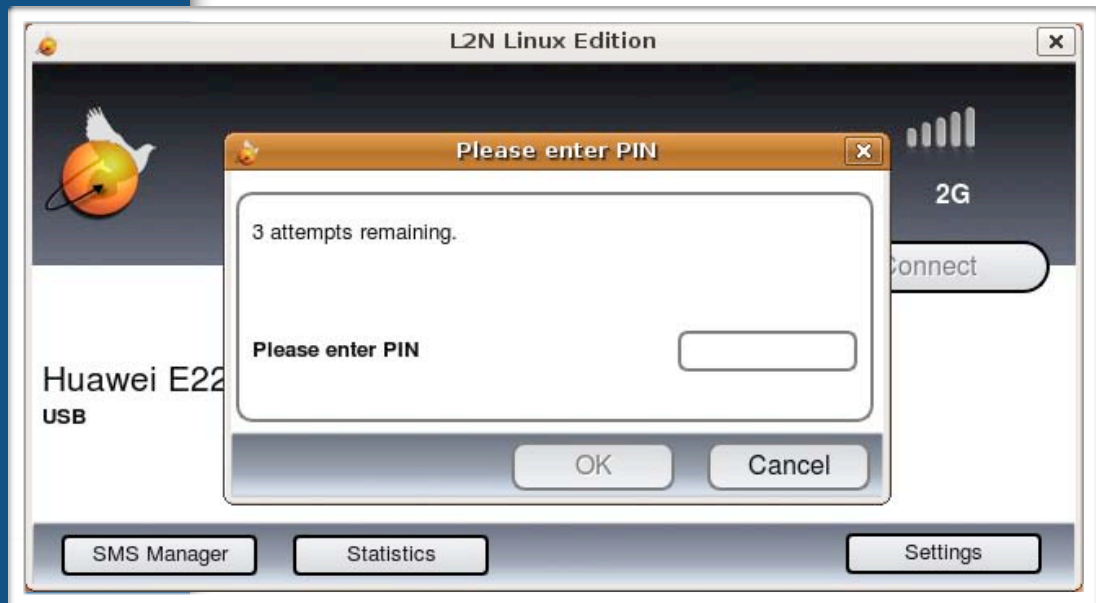
## Preparations

Mobile connections are really easy using launch2net for Linux. For faultless use of the software, please be sure to accomplish the following conditions:

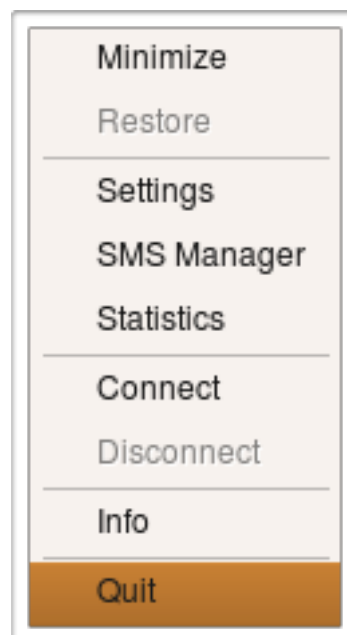
- launch2net for Linux supports many different USB-modems worldwide. An up-to-date list of all supported devices can be found on our website at [www.novamedia.de](http://www.novamedia.de)
- Make sure that your USB modem contains a working SIM Card which has been activated and enabled for data transfers.

## First start

Attach your USB modem and start launch2net for Linux. The software will search for a connected device and ask for a PIN number. This PIN number was given to you by your mobile network operator.



Please enter the PIN and click OK.

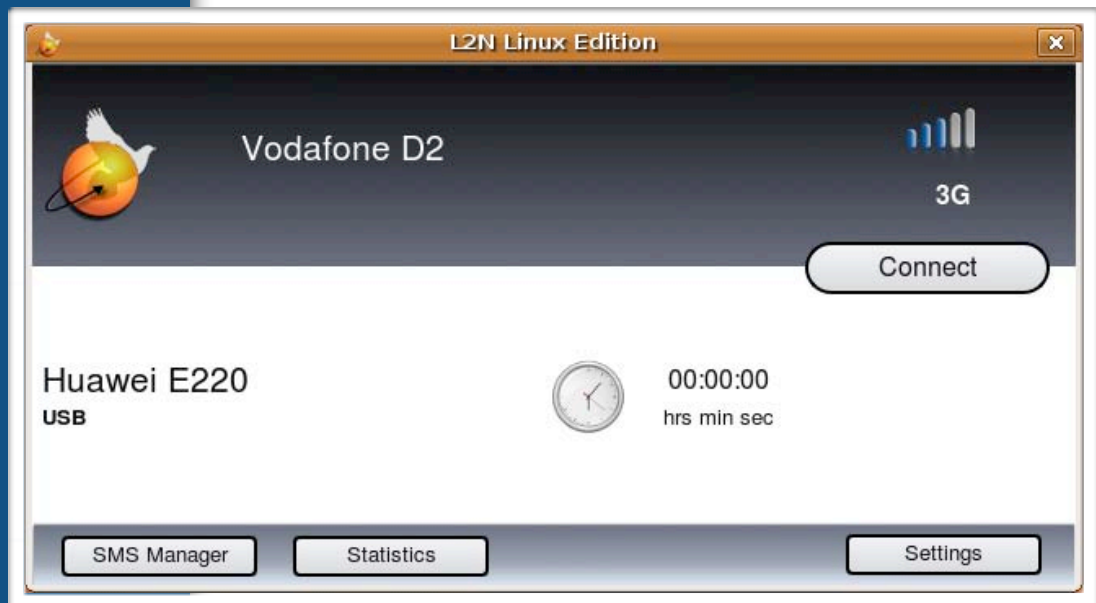


**Important notice:** If you click the X symbol in the menu bar of launch2net for Linux, the program will be switched to the background and is still running.

To access the main view again or to quit the program, please use the systray menu.

## Establishing an Internet connection

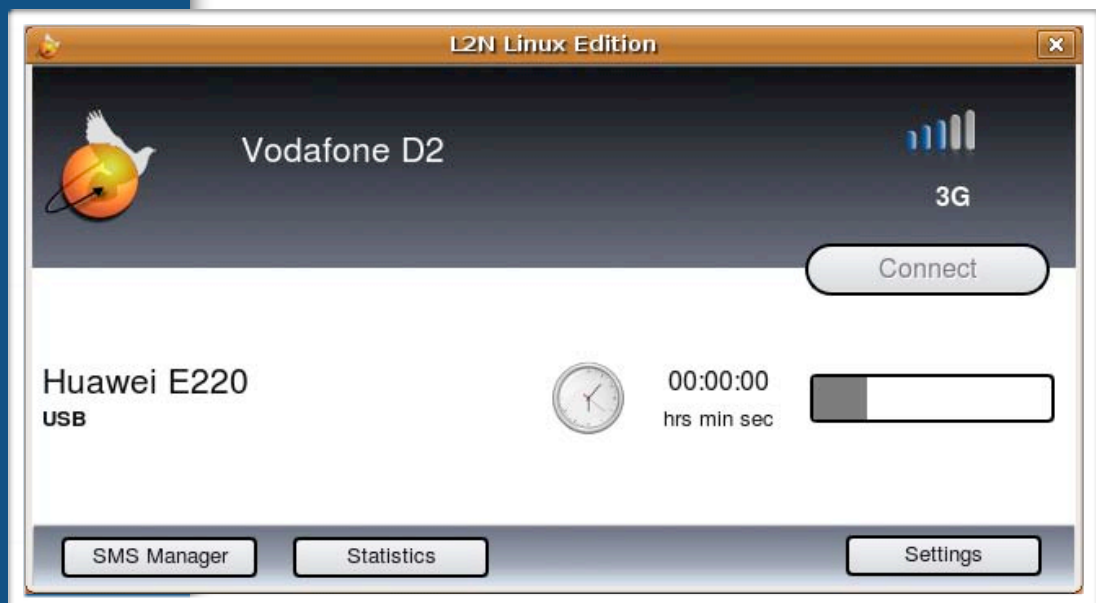
Once a compatible modem was found and the PIN was entered correctly, launch2net will display the main connection window including the device and network name as well as the signal strength.



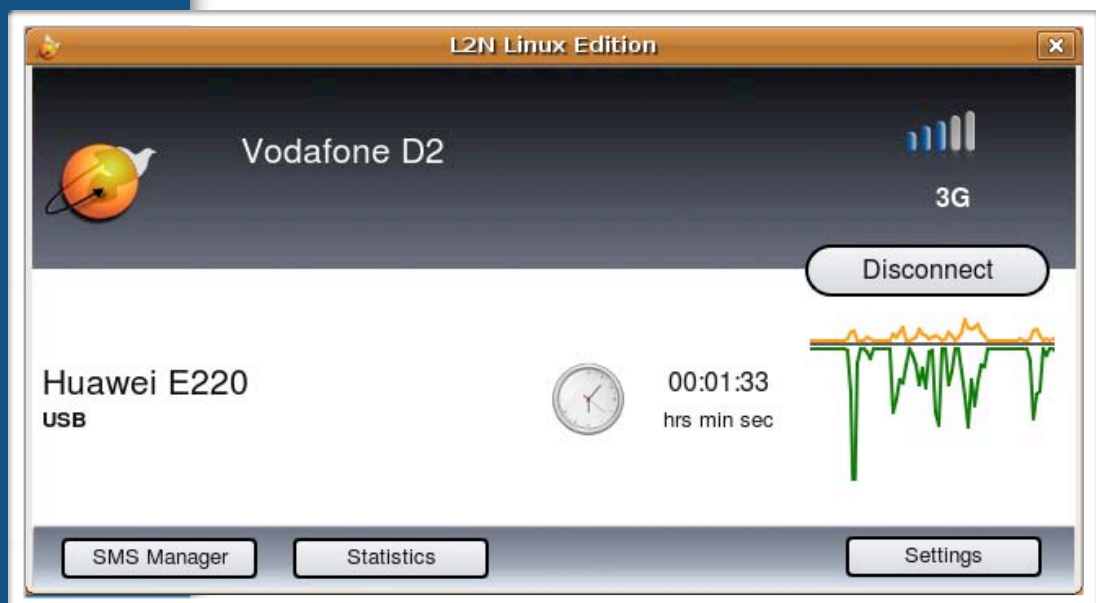
If you are in a roaming situation, you will see the word Roaming underneath the name of network.

**Roaming notice:** Using roaming may result in higher costs for every online connection. Please consult your mobile network operator first, before you establish data connections in a roaming situation.

Click **Connect**.



launch2net will now establish an Internet connection and after a few seconds you will be online.



As soon as you are online, launch2net will count the online time and display the data activity using a green graph for downloading data and a yellow graph for uploading data.

To get detailed information about the amount of data transmitted, click on the **Statistics** button.

## Connection statistics

Using launch2net for Linux to monitor your data and time usage is very convenient. As soon as you click on the statistics button, you see a list of all recent connections including the online time and data consumption.

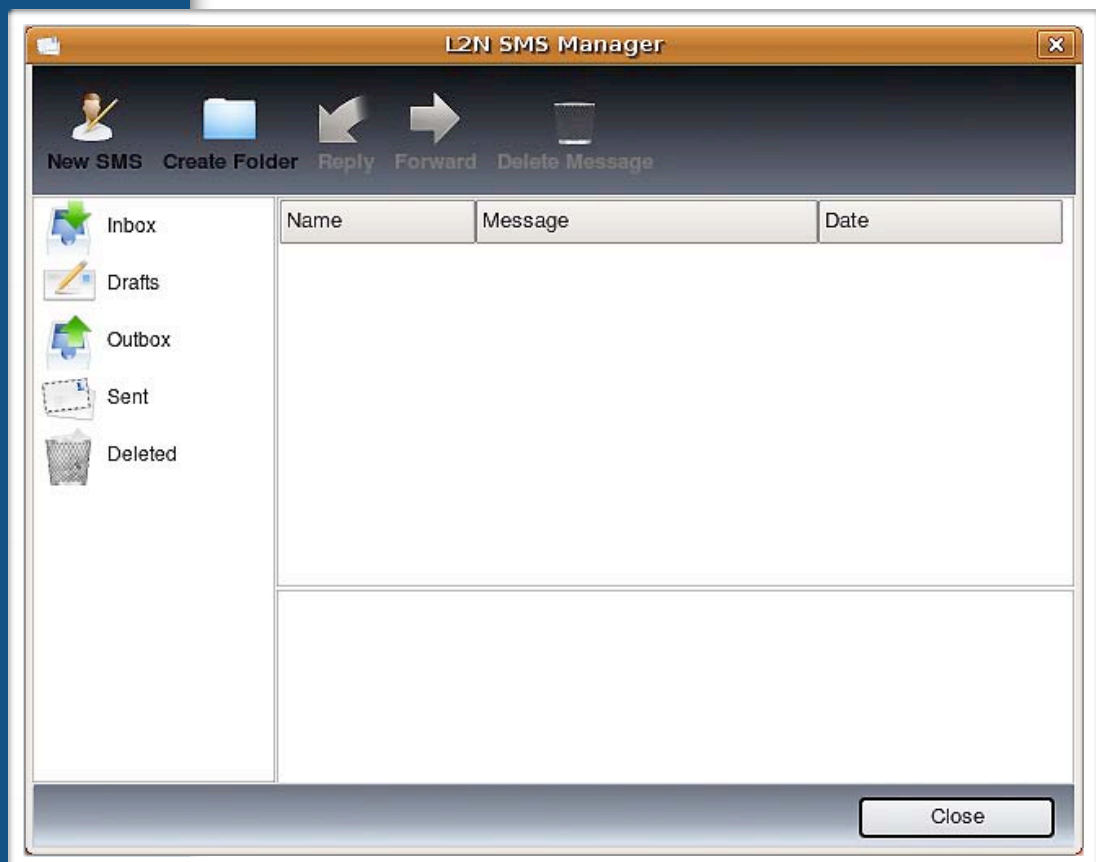


By clicking on one connection you see further details like the connection and disconnection time, the amount of data downloaded and uploaded and the modem used for this connection.

## SMS text message manager

launch2net for Linux features a powerful SMS text message manager which supports multipart and multigroup messages and SMS text message management.

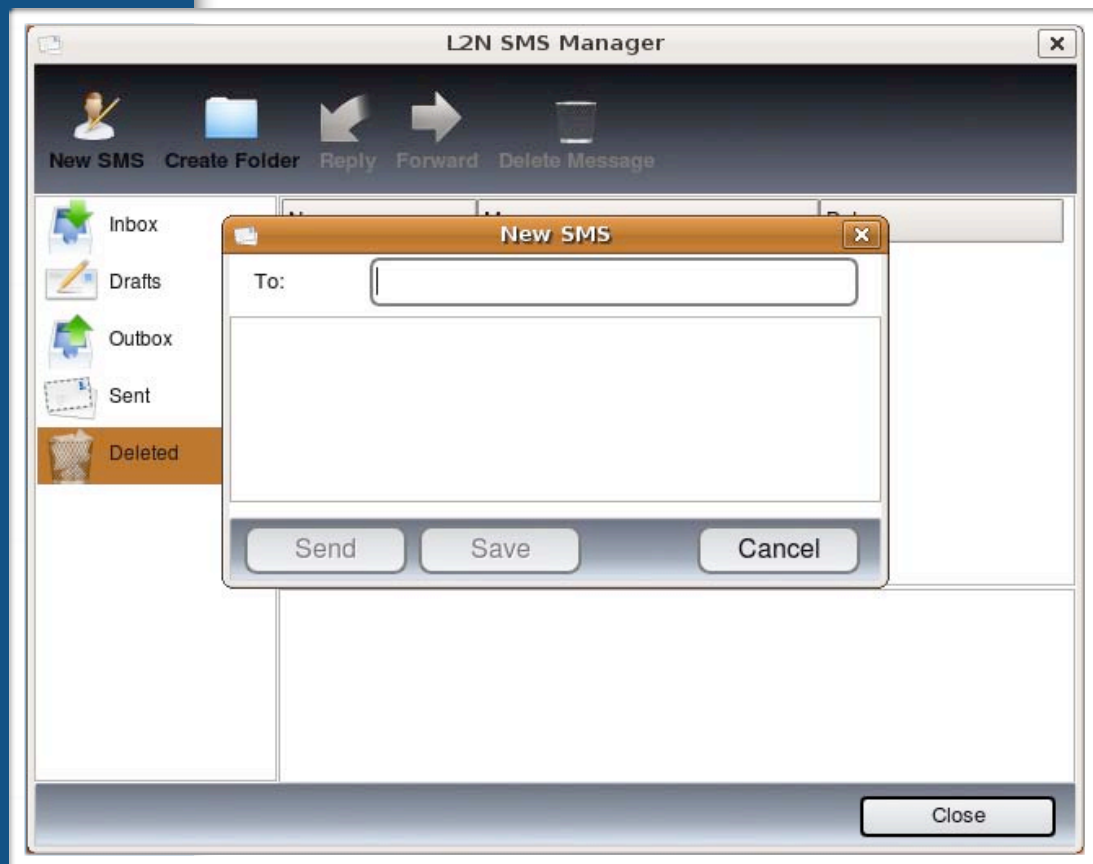
Click **SMS Manager** in the main connection screen to open the SMS text message manager.



**Important notice:** You might have to disconnect first, before you can send and receive SMS text messages.

## Sending SMS text messages

To send a new SMS text message, click **New SMS** and a new window will open.



Enter the number of the recipient including the international country code, e.g. +49 for Germany, into the **To:** field.

**Multigroup messages:** If you want to send your message to more than one recipient, you can enter up to 10 telephone numbers in the **To:** field. You have to separate the numbers by a comma.

**Multipart messages:** If you write a text message with more than 160 characters, your message will automatically be sent in two or more parts.

**Important notice:** Multigroup and Multipart messages may result in higher sending costs.

## Receiving SMS text messages

To receive SMS text messages, click the **Inbox**. New messages will appear in the list of messages.

Highlight any message to read it. You can reply to a message and/or forward a message by clicking **Reply** or **Forward**, respectively.

To delete a message, highlight it and click **Delete Message**. The message will be switched into the **Deleted** folder. To get rid of any message permanently, select the message in the Deleted folder and click **Delete Message** again.

## Managing SMS text messages

To manage your SMS text messages, you can create new folders by clicking **Create Folder**. Apply a name for the new folder and you will see it in the left pane.

If you want to delete a folder, right click on it and select **Delete**. Make sure to move the messages in this folder to another folder first, otherwise the messages will be deleted as well.

## Settings

launch2net features settings for most of its functionality. However, the Beta version does not have all options implemented. Click **Settings** in the main connection window to open the Settings.



### Custom connection settings:

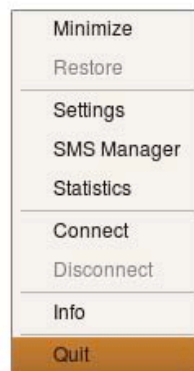
In the case that the connection settings are not available automatically, you have to use custom connection settings. Click **APN** to open the appropriate window.

The screenshot shows a dialog box titled "L2N Preferences" with a sub-header "Settings: APN". It features a checkbox labeled "Use own settings:" which is checked. Below this are six text input fields for "Name:", "APN:", "User:", "Password:", "DNS 1:", and "DNS 2:". At the bottom, there are three buttons: "Save", "Back", and "Close".

You can now enter the connection data you received from your mobile network operator. Use the **Name:** field to specify a name for this setting. This name has no relevance for any connection.

## Quitting launch2net for Linux:

To quit launch2net for Linux, you have to use the systray menu. Click on the launch2net icon in the systray to access the menu.



**Important notice:** If you click the **X** symbol in the menu bar of launch2net for Linux, the program will be switched to the background and is still running. The online connection is **not** disconnected in this case.

## Support:

We like to hear from you. Please send support requests and/or comments about launch2net for Linux Ubuntu to [linux@novamedia.de](mailto:linux@novamedia.de)

Your nova media team!